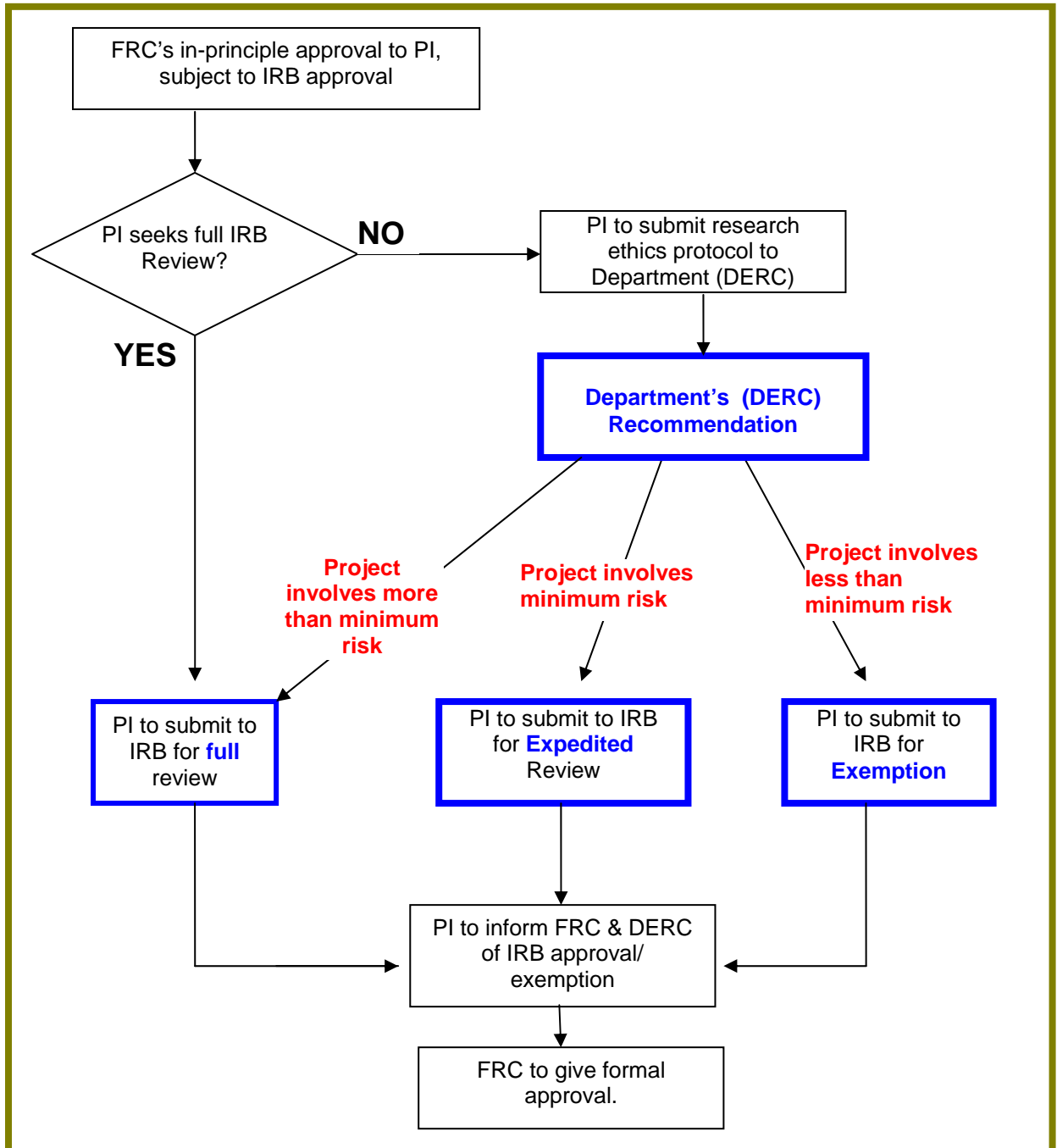


**1. Academic Research Fund (ARF) Funded Projects** (see *FASS Guidelines*, 2006:2)

- 1.1 All research involving human subjects should seek IRB approval/exemption.
- 1.2 Faculty Research Committee (FRC) will give in-principle funding approval to Principal Investigator (PI) subject to IRB approval.
- 1.3 PI may seek full review, expedited review, or IRB exemption.
- 1.4 For seeking an expedited review or exemption, PI should employ the internal mechanisms set up by his/her department (DERC) to assess the level of risk (following NUS IRB's guidelines and definitions).



**Sociology DERC-Flowchart 1**