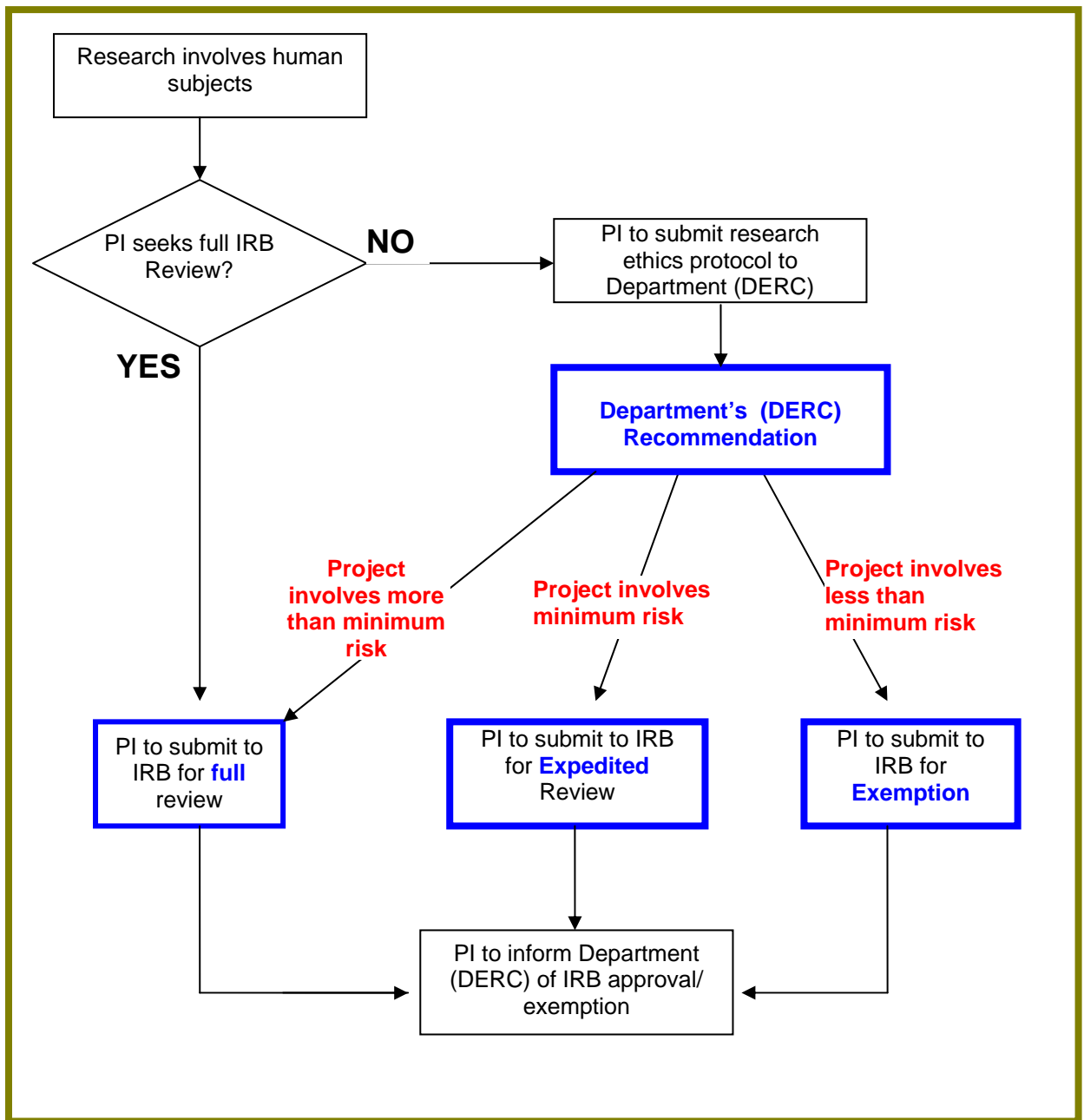


## 2. Non-funded Projects (by academic staff of the Department)

- 2.1 All research involving human subjects should seek IRB approval/exemption (*FASS Ethics Guidelines, 2006: 3*).
- 2.2 If PI seeks an expedited review or exemption, PI should employ the internal mechanisms set up by his/her department to assess the level of risk, following IRB guidelines and definitions (*FASS Ethics Guidelines, 2006: 3*).



Sociology DERC - Flowchart 2